

CrossGuard

Monitor • Automate • Protect



PERSONAL REMOTE (PR₂A)

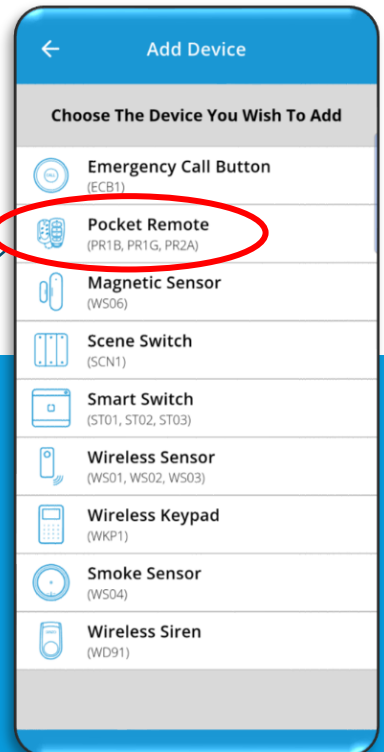
by Senzo[®]

Setup Guide

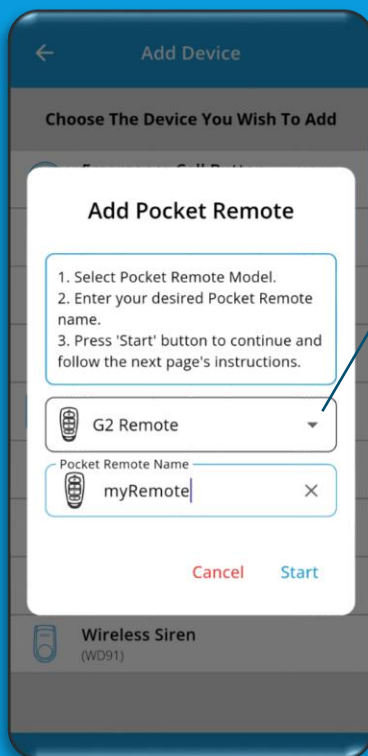
STEPS TO ADD PERSONAL REMOTE



1
Login to CrossGuard mobile app
At HOME Page, tap 'Devices'.
Then tap '+ Add' to go to Add Device page.



2
Select "Pocket Remote"

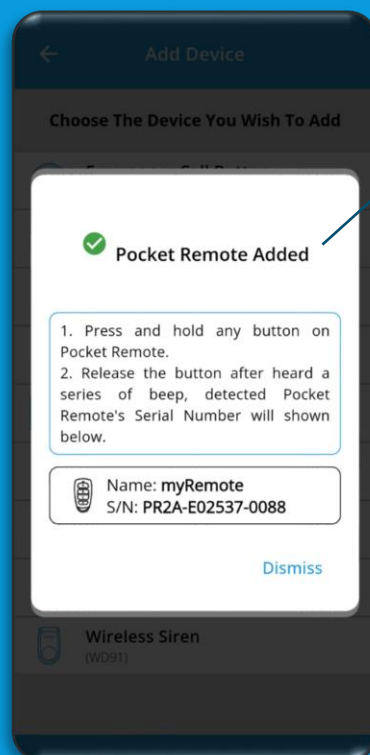


3
Select "G2 Remote" from the drop down.
Fill in all the details as required:
Give the Personal Remote a name
Then press "Start".

4
Press and hold any button for 5-seconds, then let go when you hear a series of beeps.

CrossGuard gateway and app will detect and add the remote automatically.

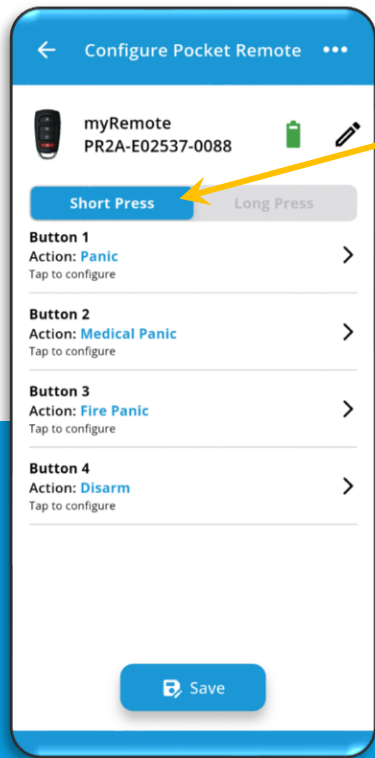
Tap on "Dismiss" upon completion to go back to "Devices" page.



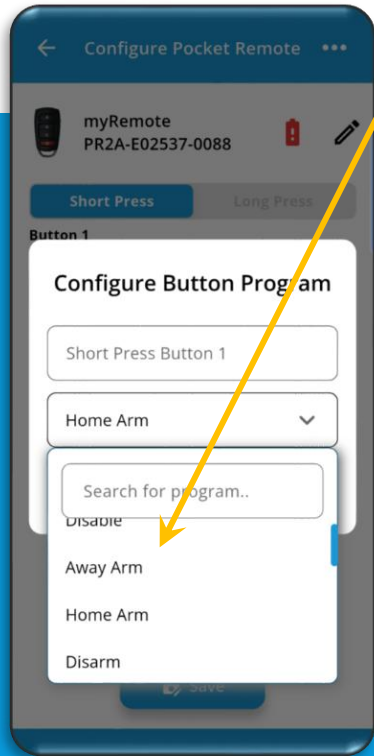
5
The newly added remote can be found in "My Devices" page where you can view all installed devices.

You can assign 2 actions per button, as there are 4 configurable buttons, thus, up to a total of 8 actions for the remote in its configuration page.

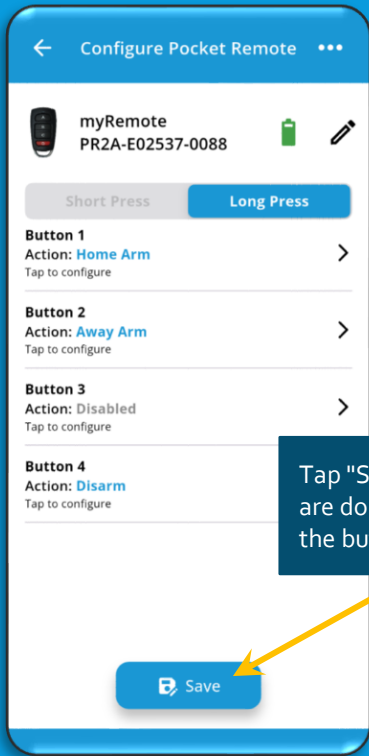
CONFIGURE PERSONAL REMOTE



Each button can be assigned with 2 actions.
(A short press and a long press)
This remote has 4 buttons, therefore 8 total actions can be assigned to the remote.
Short presses (press once and let go),
Long presses (press & hold for > 1 second, then let go)



Tap on each button to configure its action,
then select either scene or security action
from the drop down menu.



Tap "Save" when you
are done configuring
the buttons.

Personal Remote



Indicator LED

4× Configurable
Buttons

Scan for full
user guide



SETUP GUIDE